

### Features

- Attractive **tapered** design.
- “X” brace with beaded channel leg
- Enhancements made to both leg profile and taper allow for easier installation and improved tower structure
- High strength galvanized steel construction
- Designed to withhold impact load of a climber in case of a fall in accordance with CSA-S37-13. See installation instructions for more information.\*
- Sections 5 to 8 are 12 gauge, 1 to 4 are 16 gauge galvanized steel
- Eight foot sections
- Compact shipping package
- Free standing installation
- Ideal for amateur radio and industrial/commercial communications applications
- Climb shields recommended

### Standard Tower Packages

DMX towers are packaged complete with CBS concrete base stubs, DM mast, top plate, rotor plate, TMCA clamp assembly and all necessary hardware. Height includes mast.

### Medium and Heavy Duty Tower Packages

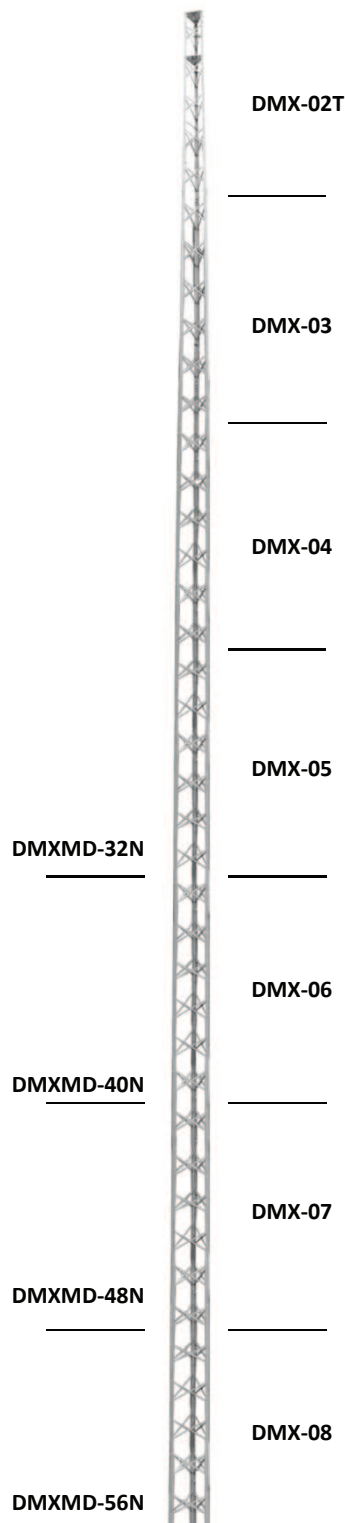
DMX Medium and Heavy Duty towers are packaged complete with CBS concrete base stubs, top plate, rotor plate, 244A mast clamp assembly and all necessary hardware.

### Tower Models

<b>DMX-28N</b> 28' (8.53 m)	<b>DMXMD-32N</b> 32' (9.75 m)
<b>DMX-36N</b> 36' (10.97 m)	<b>DMXMD-40N</b> 40' (12.19 m)
<b>DMX-44N</b> 44' (13.41 m)	<b>DMXMD-48N</b> 48' (14.63 m)
<b>DMX-52N</b> 52' (15.85 m)	<b>DMXMD-56N</b> 56' (17.07 m)
<b>DMX-60N</b> 60' (18.29 m)	<b>DMXH-32N</b> 32' (9.75 m)
<b>DMX-68N</b> 68' (20.73 m)	<b>DMXH-40N</b> 40' (12.19 m)
	<b>DMXH-48N</b> 48' (14.63 m)

**Note:** A concrete base is required. See installation instructions for more information.

WADE ANTENNA'S ONGOING POLICY OF CONTINUING DEVELOPMENT MAY RESULT IN SPECIFICATION CHANGES TO ITS PRODUCTS



A qualified structural engineer should be consulted prior to installing any tower or supporting structure.

Our published installation guidelines are for standard towers and mounting devices as specified. These guidelines are based on assumed soil conditions (190KPa or 4000 PSF) that may or may not exist in your area.

**\*\* Load Limits**

DMX Standard Duty Towers are designed to support up to 3 square feet (0.28 m<sup>2</sup>) projected wind area.

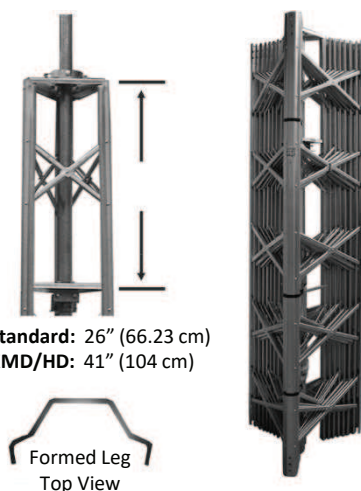
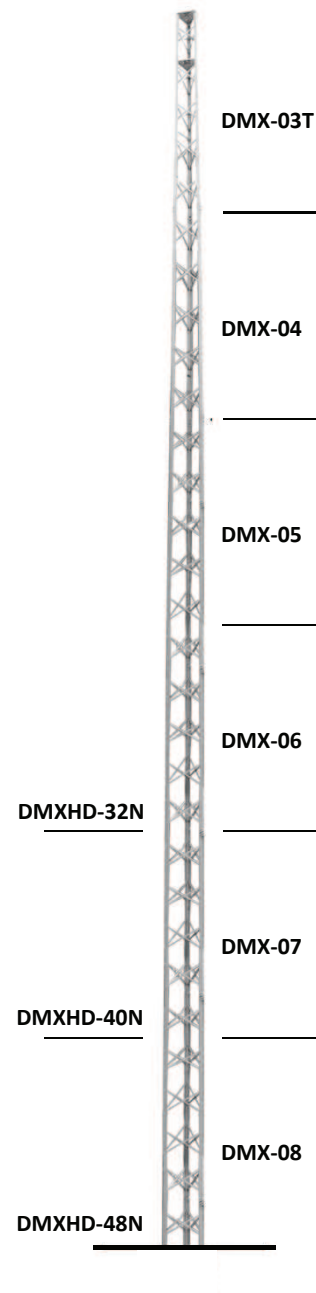
DMXMD Medium Duty Towers are designed to support up to 6 square feet (0.56 m<sup>2</sup>) projected wind area.

DMXHD Heavy Duty Towers are designed to support up to 9 square feet (0.84 m<sup>2</sup>) projected wind area.

**WARNING!**

Guy wires must be used for larger loads or if straight sections are added for extra height. However, these configurations have not been tested to CSA standards CSA-S16-09 and CSA-S37-13 for loadings larger than what is indicated above.

**Note:** For tower accessories or parts that may be ordered separately, please refer to **DMX Tower Parts**.



DMX Standard: 26" (66.23 cm)  
DMXMD/HD: 41" (104 cm)

\* Towers have not been tested to be in compliance with other sections of CSA-S37-13.  
\*\* Tower load limits are based on survival, and cannot be stamped by a licensed engineer

WADE ANTENNA'S ONGOING POLICY OF CONTINUING DEVELOPMENT MAY RESULT IN SPECIFICATION CHANGES TO ITS PRODUCTS

★ OUR NEW DMX TOWERS HAVE BEEN **ENHANCED** IN BOTH LEG PROFILE AND TAPER. THIS FACILITATES IN AN EASIER INSTALLATION AND IMPROVED TOWER STRUCTURE.

**BBMB** Cast aluminum ball bearing. Mast bearing accepts up to 2" (5.08 cm) masts.

**244A** Cast aluminum mast clamp for up to 2½" (6.35 cm) masts.

**DMXHB** Universal house bracket included with DMXB series but designed to fit all DMX sections. 1" (2.54cm) x 30" (76.2cm) arms.

**HUB 3-6** Optional hinge-up base. Threaded rod allows vertical adjustments. Fits DMX-03 to DMX-06 sections.

**TMCA** Replacement mast clamp assemblies with sleeve bearing.

**BP2S** Heavy gauge base plate fits DMX-02 or DMX-02S sections

**DM Mast** 1½" (3.81 cm) 16 ga. x 8' (2.44 m) mast as supplied in DMX and DMXB.

**Base Stubs** Set of three 4' (1.22 m) long, as shown below.

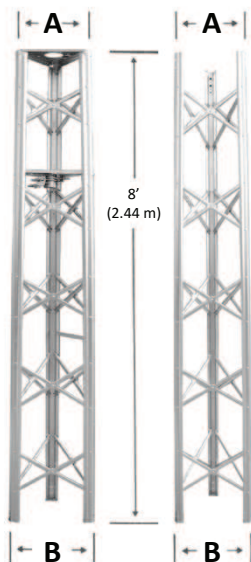
**GS123** Guy station fits DMX-01T to DMX-03 sections.

- CBS-03** Fits DMX-03
- CBS-04** Fits DMX-04
- CBS-05** Fits DMX-05
- CBS-06** Fits DMX-06
- CBS-07** Fits DMX-07
- CBS-08** Fits DMX-08

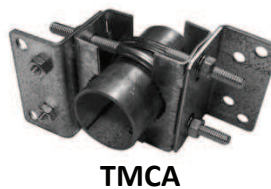
**GS456** Guy station fits DMX-04 to DMX-06 sections.

	<b>A</b>	<b>B</b>
<b>DMX-01T</b>	10 5/16" (26.19 cm)	12 11/16" (32.23 cm)
<b>DMX-02</b>	12 7/8" (32.70 cm)	14 7/8" (37.78 cm)
<b>DMX-02S</b>	15" (38.10 cm)	14 7/8" (37.78 cm)
<b>DMX-02T</b>	12 7/8" (32.70 cm)	14 7/8" (37.78 cm)
<b>DMX-03</b>	15 1/8" (38.42 cm)	16 15/16" (43.02 cm)
<b>DMX-03T</b>	15 1/8" (38.42 cm)	16 15/16" (43.02 cm)
<b>DMX-04</b>	17 3/8" (44.13 cm)	19 1/4" (48.90 cm)
<b>DMX-04T</b>	17 3/8" (44.13 cm)	19 1/4" (48.90 cm)
<b>DMX-04S</b>	19 11/16" (50.01 cm)	19 1/4" (48.90 cm)
<b>DMX-05</b>	19 1/2" (49.53 cm)	21 5/8" (54.93 cm)
<b>DMX-05S</b>	22 3/16" (56.36 cm)	21 15/16" (55.22 cm)
<b>DMX-06</b>	22" (55.88 cm)	24 3/16" (61.44 cm)
<b>DMX-07</b>	24 1/4" (62.87 cm)	26 11/16" (67.79 cm)
<b>DMX-08</b>	27 1/16" (68.74 cm)	29 1/4" (74.30 cm)

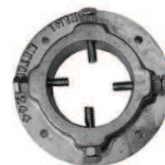
**\*\* Climb shields and hardware kits are also available**



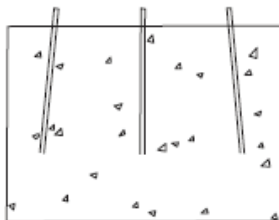
**GS123  
GS456**



**TMCA**



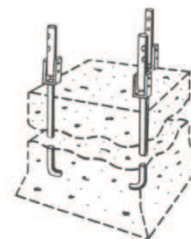
**244A**



**CBS-03 CBS-06  
CBS-04 CBS-07  
CBS-05 CBS-08**



**BBMB**



**HUB 3-6**

WADE ANTENNA'S ONGOING POLICY OF CONTINUING DEVELOPMENT MAY RESULT IN SPECIFICATION CHANGES TO ITS PRODUCTS

## Caution Notice

### Please Read Carefully

Our published installation guidelines are for standard towers and mounting devices as specified. These guidelines are based on assumed soil and weather conditions that may or may not exist in your area and on the assumption that no damage has occurred or modifications made to the tower or mounting device.

A qualified structural engineer should be consulted prior to installing any tower or supporting structure.



### **WARNING!**

Survey your installation site **NOW** to prevent your antenna or support from coming in contact with overhead powerlines. Caution should be used when climbing towers and support structures.

**FAILURE TO EXERCISE CAUTION MAY RESULT IN SERIOUS INJURY OR DEATH.**

Wade Antenna's ongoing policy of continuing development may result in specification changes to its products.